

# 以太网解决方案

针对 MARVELL - 大众市场 PHY

## 产品选型指南



Stewart Connector和 Bel Magnetic Solution品牌包含全面的连接器产品组合以及磁性选项，将Bel的连接器和磁性设计专业知识相结合，以提供最高水平连接和信号调理。

### 连接器选项

- 插上卡舌或插上卡舌
- 带或不带 LED（和双色）
- 多端口配置：2x1 / 2x4 / 2x6 / 2x8
- RJ45 和 USB 端口组合
- 高度低于 0.5 英寸的低膨胀版本
- 高度低于 0.45 " 的微型版本
- 高度低于 0.40 英寸的中板安装版本
- 垂直安装包装

### 磁性选项

- 10/100 自动MDIX
- 10/100/1000 千兆位
- 以太网供电（PoE）选项
- 扩展温度范围：-40°C至+85°C

## Bel Magnetic 解决方案

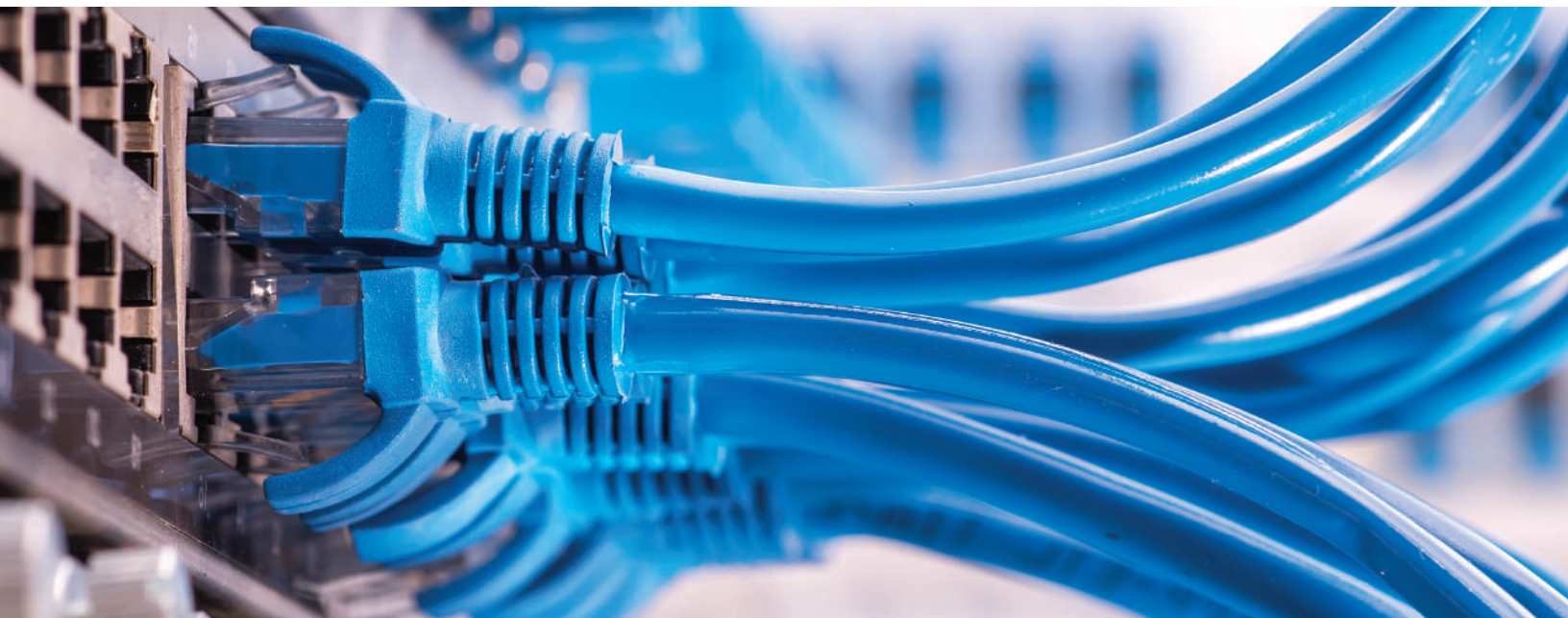
分立式 LAN 磁性元件产品线包括广泛的一系列专为使用而设计的基于磁性的解决方案在高速计算机和网络应用中。  
Bel的单通道、双通道和四通道SMT 模块产品组合与 IEEE 802.3以太网标准兼容  
用于 10/100 1G、2.5G、5G 和 10GBaseT传输。  
产品开发将继续专注于设备  
与支持所需的带宽兼容  
语音/视频/数据网络的融合，  
高性能计算和存储流量  
企业空间和数据中心。

## Stewart 连接器

Stewart Connector 产品组合包括当今市场上最广泛的以太网连接之一。我们的互连产品线包括无源插孔、插头和电缆组件，可在网络设备中提供连接。我们所有的连接器产品都旨在满足行业标准的性能要求，并能够通过 10GBaseT 以太网提供数据速度。此外，我们的产品设计超越了所有现有 PoE 标准的要求，包括：PoE、PoE+ 和 100W PoE。



<http://www.powertech.com>





# 10/100 单端口 PHY

| IC系列                                     | 产品编号              |     |  |     | 端口配置 | LEDs | 取向    | 应用               | 工作温度        |
|--|-------------------|-----|--|-----|------|------|-------|------------------|-------------|
|  | Bel Magnetic 解决方案 | 端口数 | Stewart 连接器                            | 端口数 |      |      |       |                  |             |
| 88E301X<br>88E3015<br>88E3016<br>88E3019 | S558-5500-25-F    | 1   | <a href="#">SS-7488SC5-GG-PG4-BA</a>   | 1   | 1x1  | Yes  | 选项卡向下 | 10/100BaseT PoE  | 0 to 70°C   |
|  |                   |     | <a href="#">SS-700810S-A-PG4-BA</a>    | 1   | 1x1  | No   | 选项卡向下 | 10/100BaseT PoE  | 0 to 70°C   |
|  |                   |     | <a href="#">SS-74301-001</a>           | 1   | 1x1  | Yes  | 垂直    | 10/100BaseT PoE  | 0 to 70°C   |
|  |                   |     | <a href="#">SS-7188VS-A-NF-50</a>      | 1   | 1x1  | No   | 垂直    | 10/100BaseT PoE  | 0 to 70°C   |
|  |                   |     | <a href="#">SS-748802SC5-YG-PG4-BZ</a> | 2   | 1x2  | Yes  | 选项卡向下 | 10/100BaseT PoE  | 0 to 70°C   |
|  |                   |     | <a href="#">SS71800-035F</a>           | 2   | 1x2  | No   | 选项卡向下 | 10/100BaseT PoE  | 0 to 70°C   |
|  |                   |     | <a href="#">SS-748804SC5-YG-PG4-BZ</a> | 4   | 1x4  | Yes  | 选项卡向下 | 10/100BaseT PoE  | 0 to 70°C   |
|  |                   |     | <a href="#">SS71800-041F</a>           | 4   | 1x4  | No   | 选项卡向下 | 10/100BaseT PoE  | 0 to 70°C   |
|  |                   |     | <a href="#">SS-74500-029</a>           | 2   | 2x1  | Yes  | 堆叠    | 10/100BaseT PoE  | 0 to 70°C   |
|  |                   |     | <a href="#">SS-73100-082</a>           | 2   | 2x1  | No   | 堆叠    | 10/100BaseT PoE  | 0 to 70°C   |
|  |                   |     | <a href="#">SS-74500-020</a>           | 4   | 2x2  | Yes  | 堆叠    | 10/100BaseT PoE  | 0 to 70°C   |
|  |                   |     | <a href="#">SS-7388H22S-PG4-AC-50</a>  | 4   | 2x2  | No   | 堆叠    | 10/100BaseT PoE  | 0 to 70°C   |
|  |                   |     | <a href="#">SS-74500-024</a>           | 8   | 2x4  | Yes  | 堆叠    | 10/100BaseT PoE  | 0 to 70°C   |
|  |                   |     | <a href="#">SS-73100-073</a>           | 8   | 2x4  | No   | 堆叠    | 10/100BaseT PoE  | 0 to 70°C   |
|  |                   |     | <a href="#">SS-74500-028</a>           | 12  | 2x6  | Yes  | 堆叠    | 10/100BaseT PoE  | 0 to 70°C   |
|  |                   |     | <a href="#">SS73100-046F</a>           | 12  | 2x6  | No   | 堆叠    | 10/100BaseT PoE  | 0 to 70°C   |
|  |                   |     | <a href="#">SS-74500-022</a>           | 16  | 2x8  | Yes  | 堆叠    | 10/100BaseT PoE  | 0 to 70°C   |
|  |                   |     | <a href="#">SS73100-047F</a>           | 16  | 2x8  | No   | 堆叠    | 10/100BaseT PoE  | 0 to 70°C   |
| 88E3018                                  | S558-5500-67      | 1   | <a href="#">SS-7488SC5-GG-PG4-BA</a>   | 1   | 1x1  | Yes  | 选项卡向下 | 10/100BaseT PoE+ | -40 to 85°C |
|  |                   |     | <a href="#">SS-700810S-A-PG4-BA</a>    | 1   | 1x1  | No   | 选项卡向下 | 10/100BaseT PoE+ | -40 to 85°C |
|  |                   |     | <a href="#">SS-74301-001</a>           | 1   | 1x1  | Yes  | 垂直    | 10/100BaseT PoE+ | -40 to 85°C |
|  |                   |     | <a href="#">SS-7188VS-A-NF-50</a>      | 1   | 1x1  | No   | 垂直    | 10/100BaseT PoE+ | -40 to 85°C |
|  |                   |     | <a href="#">SS-748802SC5-YG-PG4-BZ</a> | 2   | 1x2  | Yes  | 选项卡向下 | 10/100BaseT PoE+ | -40 to 85°C |
|  |                   |     | <a href="#">SS71800-035F</a>           | 2   | 1x2  | No   | 选项卡向下 | 10/100BaseT PoE+ | -40 to 85°C |
|  |                   |     | <a href="#">SS-748804SC5-YG-PG4-BZ</a> | 4   | 1x4  | Yes  | 选项卡向下 | 10/100BaseT PoE+ | -40 to 85°C |
|  |                   |     | <a href="#">SS71800-041F</a>           | 4   | 1x4  | No   | 选项卡向下 | 10/100BaseT PoE+ | -40 to 85°C |
|  |                   |     | <a href="#">SS-74500-029</a>           | 2   | 2x1  | Yes  | 堆叠    | 10/100BaseT PoE+ | -40 to 85°C |
|  |                   |     | <a href="#">SS-73100-082</a>           | 2   | 2x1  | No   | 堆叠    | 10/100BaseT PoE+ | -40 to 85°C |
|  |                   |     | <a href="#">SS-74500-020</a>           | 4   | 2x2  | Yes  | 堆叠    | 10/100BaseT PoE+ | -40 to 85°C |
|  |                   |     | <a href="#">SS-7388H22S-PG4-AC-50</a>  | 4   | 2x2  | No   | 堆叠    | 10/100BaseT PoE+ | -40 to 85°C |
|  |                   |     | <a href="#">SS-74500-024</a>           | 8   | 2x4  | Yes  | 堆叠    | 10/100BaseT PoE+ | -40 to 85°C |
|  |                   |     | <a href="#">SS-73100-073</a>           | 8   | 2x4  | No   | 堆叠    | 10/100BaseT PoE+ | -40 to 85°C |
|  |                   |     | <a href="#">SS-74500-028</a>           | 12  | 2x6  | Yes  | 堆叠    | 10/100BaseT PoE+ | -40 to 85°C |
|  |                   |     | <a href="#">SS73100-046F</a>           | 12  | 2x6  | No   | 堆叠    | 10/100BaseT PoE+ | -40 to 85°C |
|  |                   |     | <a href="#">SS-74500-022</a>           | 16  | 2x8  | Yes  | 堆叠    | 10/100BaseT PoE+ | -40 to 85°C |
|  |                   |     | <a href="#">SS73100-047F</a>           | 16  | 2x8  | No   | 堆叠    | 10/100BaseT PoE+ | -40 to 85°C |

## 10/100 多端口 PHY (续)

| IC 系列  | 产品编号              |     |  |     | 端口配置 | LEDs | 取向    | 应用          | 工作温度        |
|--|-------------------|-----|--|-----|------|------|-------|-------------|-------------|
|  | Bel Magnetic 解决方案 | 端口数 | Stewart 连接器                            | 端口数 |      |      |       |             |             |
| 88E3082<br>88E3083<br>88E6020<br>88E6220<br>88E6085<br>88E6085A<br>88E6046 | S558-5999-46-F    | 1   | <a href="#">SS-7488SC5-GG-PG4-BA</a>   | 1   | 1x1  | Yes  | 选项卡向下 | 10/100BaseT | 0 to 70°C   |
|  |                   |     | <a href="#">SS-700810S-A-PG4-BA</a>    | 1   | 1x1  | No   | 选项卡向下 | 10/100BaseT | 0 to 70°C   |
|  |                   |     | <a href="#">SS-74301-001</a>           | 1   | 1x1  | Yes  | 垂直    | 10/100BaseT | 0 to 70°C   |
|  |                   |     | <a href="#">SS-7188VS-A-NF-50</a>      | 1   | 1x1  | No   | 垂直    | 10/100BaseT | 0 to 70°C   |
|  |                   |     | <a href="#">SS-748802SC5-YG-PG4-BZ</a> | 2   | 1x2  | Yes  | 选项卡向下 | 10/100BaseT | 0 to 70°C   |
|  |                   |     | <a href="#">SS71800-035F</a>           | 2   | 1x2  | No   | 选项卡向下 | 10/100BaseT | 0 to 70°C   |
|  |                   |     | <a href="#">SS-748804SC5-YG-PG4-BZ</a> | 4   | 1x4  | Yes  | 选项卡向下 | 10/100BaseT | 0 to 70°C   |
|  |                   |     | <a href="#">SS71800-041F</a>           | 4   | 1x4  | No   | 选项卡向下 | 10/100BaseT | 0 to 70°C   |
|  |                   |     | <a href="#">SS-74500-029</a>           | 2   | 2x1  | Yes  | 堆叠    | 10/100BaseT | 0 to 70°C   |
|  |                   |     | <a href="#">SS-73100-082</a>           | 2   | 2x1  | No   | 堆叠    | 10/100BaseT | 0 to 70°C   |
|  |                   |     | <a href="#">SS-74500-020</a>           | 4   | 2x2  | Yes  | 堆叠    | 10/100BaseT | 0 to 70°C   |
|  |                   |     | <a href="#">SS-7388H22S-PG4-AC-50</a>  | 4   | 2x2  | No   | 堆叠    | 10/100BaseT | 0 to 70°C   |
|  |                   |     | <a href="#">SS-74500-024</a>           | 8   | 2x4  | Yes  | 堆叠    | 10/100BaseT | 0 to 70°C   |
|  |                   |     | <a href="#">SS-73100-073</a>           | 8   | 2x4  | No   | 堆叠    | 10/100BaseT | 0 to 70°C   |
|  |                   |     | <a href="#">SS-74500-028</a>           | 12  | 2x6  | Yes  | 堆叠    | 10/100BaseT | 0 to 70°C   |
|  |                   |     | <a href="#">SS73100-046F</a>           | 12  | 2x6  | No   | 堆叠    | 10/100BaseT | 0 to 70°C   |
|  |                   |     | <a href="#">SS-74500-022</a>           | 16  | 2x8  | Yes  | 堆叠    | 10/100BaseT | 0 to 70°C   |
|  |                   |     | <a href="#">SS73100-047F</a>           | 16  | 2x8  | No   | 堆叠    | 10/100BaseT | 0 to 70°C   |
| 88E6240<br>88E6096<br>88E6097<br>88E6290                                   | S558-5999-T5-F    | 1   | <a href="#">SS-7488SC5-GG-PG4-BA</a>   | 1   | 1x1  | Yes  | 选项卡向下 | 10/100BaseT | -40 to 85°C |
|  |                   |     | <a href="#">SS-700810S-A-PG4-BA</a>    | 1   | 1x1  | No   | 选项卡向下 | 10/100BaseT | -40 to 85°C |
|  |                   |     | <a href="#">SS-74301-001</a>           | 1   | 1x1  | Yes  | 垂直    | 10/100BaseT | -40 to 85°C |
|  |                   |     | <a href="#">SS-7188VS-A-NF-50</a>      | 1   | 1x1  | No   | 垂直    | 10/100BaseT | -40 to 85°C |
|  |                   |     | <a href="#">SS-748802SC5-YG-PG4-BZ</a> | 2   | 1x2  | Yes  | 选项卡向下 | 10/100BaseT | -40 to 85°C |
|  |                   |     | <a href="#">SS71800-035F</a>           | 2   | 1x2  | No   | 选项卡向下 | 10/100BaseT | -40 to 85°C |
|  |                   |     | <a href="#">SS-748804SC5-YG-PG4-BZ</a> | 4   | 1x4  | Yes  | 选项卡向下 | 10/100BaseT | -40 to 85°C |
|  |                   |     | <a href="#">SS71800-041F</a>           | 4   | 1x4  | No   | 选项卡向下 | 10/100BaseT | -40 to 85°C |
|  |                   |     | <a href="#">SS-74500-029</a>           | 2   | 2x1  | Yes  | 堆叠    | 10/100BaseT | -40 to 85°C |
|  |                   |     | <a href="#">SS-73100-082</a>           | 2   | 2x1  | No   | 堆叠    | 10/100BaseT | -40 to 85°C |
|  |                   |     | <a href="#">SS-74500-020</a>           | 4   | 2x2  | Yes  | 堆叠    | 10/100BaseT | -40 to 85°C |
|  |                   |     | <a href="#">SS-7388H22S-PG4-AC-50</a>  | 4   | 2x2  | No   | 堆叠    | 10/100BaseT | -40 to 85°C |
|  |                   |     | <a href="#">SS-74500-024</a>           | 8   | 2x4  | Yes  | 堆叠    | 10/100BaseT | -40 to 85°C |
|  |                   |     | <a href="#">SS-73100-073</a>           | 8   | 2x4  | No   | 堆叠    | 10/100BaseT | -40 to 85°C |
|  |                   |     | <a href="#">SS-74500-028</a>           | 12  | 2x6  | Yes  | 堆叠    | 10/100BaseT | -40 to 85°C |
|  |                   |     | <a href="#">SS73100-046F</a>           | 12  | 2x6  | No   | 堆叠    | 10/100BaseT | -40 to 85°C |
|  |                   |     | <a href="#">SS-74500-022</a>           | 16  | 2x8  | Yes  | 堆叠    | 10/100BaseT | -40 to 85°C |
|  |                   |     | <a href="#">SS73100-047F</a>           | 16  | 2x8  | No   | 堆叠    | 10/100BaseT | -40 to 85°C |

## 10/100 多端口 PHY (续)

| IC 系列   | 产品编号              |     |  |     | 端口配置 | LEDs | 取向    | 应用          | 工作温度        |
|---------|-------------------|-----|--|-----|------|------|-------|-------------|-------------|
|         | Bel Magnetic 解决方案 | 端口数 | Stewart 连接器                            | 端口数 |      |      |       |             |             |
| 88E6070 | S558-5999-U7-F    | 1   | <a href="#">SS-7488SC5-GG-PG4-BA</a>   | 1   | 1x1  | Yes  | 选项卡向下 | 10/100BaseT | -40 to 85°C |
|         |                   |     | <a href="#">SS-700810S-A-PG4-BA</a>    | 1   | 1x1  | No   | 选项卡向下 | 10/100BaseT | -40 to 85°C |
|         |                   |     | <a href="#">SS-74301-001</a>           | 1   | 1x1  | Yes  | 垂直    | 10/100BaseT | -40 to 85°C |
|         |                   |     | <a href="#">SS-7188VS-A-NF-50</a>      | 1   | 1x1  | No   | 垂直    | 10/100BaseT | -40 to 85°C |
|         |                   |     | <a href="#">SS-748802SC5-YG-PG4-BZ</a> | 2   | 1x2  | Yes  | 选项卡向下 | 10/100BaseT | -40 to 85°C |
|         |                   |     | <a href="#">SS71800-035F</a>           | 2   | 1x2  | No   | 选项卡向下 | 10/100BaseT | -40 to 85°C |
|         |                   |     | <a href="#">SS-748804SC5-YG-PG4-BZ</a> | 4   | 1x4  | Yes  | 选项卡向下 | 10/100BaseT | -40 to 85°C |
|         |                   |     | <a href="#">SS71800-041F</a>           | 4   | 1x4  | No   | 选项卡向下 | 10/100BaseT | -40 to 85°C |
|         |                   |     | <a href="#">SS-74500-029</a>           | 2   | 2x1  | Yes  | 堆叠    | 10/100BaseT | -40 to 85°C |
|         |                   |     | <a href="#">SS-73100-082</a>           | 2   | 2x1  | No   | 堆叠    | 10/100BaseT | -40 to 85°C |
|         |                   |     | <a href="#">SS-74500-020</a>           | 4   | 2x2  | Yes  | 堆叠    | 10/100BaseT | -40 to 85°C |
|         |                   |     | <a href="#">SS-7388H22S-PG4-AC-50</a>  | 4   | 2x2  | No   | 堆叠    | 10/100BaseT | -40 to 85°C |
|         |                   |     | <a href="#">SS-74500-024</a>           | 8   | 2x4  | Yes  | 堆叠    | 10/100BaseT | -40 to 85°C |
|         |                   |     | <a href="#">SS-73100-073</a>           | 8   | 2x4  | No   | 堆叠    | 10/100BaseT | -40 to 85°C |
|         |                   |     | <a href="#">SS-74500-028</a>           | 12  | 2x6  | Yes  | 堆叠    | 10/100BaseT | -40 to 85°C |
|         |                   |     | <a href="#">SS73100-046F</a>           | 12  | 2x6  | No   | 堆叠    | 10/100BaseT | -40 to 85°C |
|         |                   |     | <a href="#">SS-74500-022</a>           | 16  | 2x8  | Yes  | 堆叠    | 10/100BaseT | -40 to 85°C |
|         |                   |     | <a href="#">SS73100-047F</a>           | 16  | 2x8  | No   | 堆叠    | 10/100BaseT | -40 to 85°C |
| 88E6071 | S558-5999-W2-F    | 1   | <a href="#">SS-7488SC5-GG-PG4-BA</a>   | 1   | 1x1  | Yes  | 选项卡向下 | 10/100BaseT | -40 to 85°C |
|         |                   |     | <a href="#">SS-700810S-A-PG4-BA</a>    | 1   | 1x1  | No   | 选项卡向下 | 10/100BaseT | -40 to 85°C |
|         |                   |     | <a href="#">SS-74301-001</a>           | 1   | 1x1  | Yes  | 垂直    | 10/100BaseT | -40 to 85°C |
|         |                   |     | <a href="#">SS-7188VS-A-NF-50</a>      | 1   | 1x1  | No   | 垂直    | 10/100BaseT | -40 to 85°C |
|         |                   |     | <a href="#">SS-748802SC5-YG-PG4-BZ</a> | 2   | 1x2  | Yes  | 选项卡向下 | 10/100BaseT | -40 to 85°C |
|         |                   |     | <a href="#">SS71800-035F</a>           | 2   | 1x2  | No   | 选项卡向下 | 10/100BaseT | -40 to 85°C |
|         |                   |     | <a href="#">SS-748804SC5-YG-PG4-BZ</a> | 4   | 1x4  | Yes  | 选项卡向下 | 10/100BaseT | -40 to 85°C |
|         |                   |     | <a href="#">SS71800-041F</a>           | 4   | 1x4  | No   | 选项卡向下 | 10/100BaseT | -40 to 85°C |
|         |                   |     | <a href="#">SS-74500-029</a>           | 2   | 2x1  | Yes  | 堆叠    | 10/100BaseT | -40 to 85°C |
|         |                   |     | <a href="#">SS-73100-082</a>           | 2   | 2x1  | No   | 堆叠    | 10/100BaseT | -40 to 85°C |
|         |                   |     | <a href="#">SS-74500-020</a>           | 4   | 2x2  | Yes  | 堆叠    | 10/100BaseT | -40 to 85°C |
|         |                   |     | <a href="#">SS-7388H22S-PG4-AC-50</a>  | 4   | 2x2  | No   | 堆叠    | 10/100BaseT | -40 to 85°C |
|         |                   |     | <a href="#">SS-74500-024</a>           | 8   | 2x4  | Yes  | 堆叠    | 10/100BaseT | -40 to 85°C |
|         |                   |     | <a href="#">SS-73100-073</a>           | 8   | 2x4  | No   | 堆叠    | 10/100BaseT | -40 to 85°C |
|         |                   |     | <a href="#">SS-74500-028</a>           | 12  | 2x6  | Yes  | 堆叠    | 10/100BaseT | -40 to 85°C |
|         |                   |     | <a href="#">SS73100-046F</a>           | 12  | 2x6  | No   | 堆叠    | 10/100BaseT | -40 to 85°C |
|         |                   |     | <a href="#">SS-74500-022</a>           | 16  | 2x8  | Yes  | 堆叠    | 10/100BaseT | -40 to 85°C |
|         |                   |     | <a href="#">SS73100-047F</a>           | 16  | 2x8  | No   | 堆叠    | 10/100BaseT | -40 to 85°C |

# 10/100 多端口 PHY (续)

| IC 系列   | 产品编号              |     |  |     | 端口配置 | LEDs | 取向    | 应用          | 工作温度        |
|---------|-------------------|-----|--|-----|------|------|-------|-------------|-------------|
|         | Bel Magnetic 解决方案 | 端口数 | Stewart 连接器                            | 端口数 |      |      |       |             |             |
| 88E6250 | S558-5999-Z5-F    | 1   | <a href="#">SS-7488SC5-GG-PG4-BA</a>   | 1   | 1x1  | Yes  | 选项卡向下 | 10/100BaseT | -40 to 85°C |
|         |                   |     | <a href="#">SS-700810S-A-PG4-BA</a>    | 1   | 1x1  | No   | 选项卡向下 | 10/100BaseT | -40 to 85°C |
|         |                   |     | <a href="#">SS-74301-001</a>           | 1   | 1x1  | Yes  | 垂直    | 10/100BaseT | -40 to 85°C |
|         |                   |     | <a href="#">SS-7188VS-A-NF-50</a>      | 1   | 1x1  | No   | 垂直    | 10/100BaseT | -40 to 85°C |
|         |                   |     | <a href="#">SS-748802SC5-YG-PG4-BZ</a> | 2   | 1x2  | Yes  | 选项卡向下 | 10/100BaseT | -40 to 85°C |
|         |                   |     | <a href="#">SS71800-035F</a>           | 2   | 1x2  | No   | 选项卡向下 | 10/100BaseT | -40 to 85°C |
|         |                   |     | <a href="#">SS-748804SC5-YG-PG4-BZ</a> | 4   | 1x4  | Yes  | 选项卡向下 | 10/100BaseT | -40 to 85°C |
|         |                   |     | <a href="#">SS71800-041F</a>           | 4   | 1x4  | No   | 选项卡向下 | 10/100BaseT | -40 to 85°C |
|         |                   |     | <a href="#">SS-74500-029</a>           | 2   | 2x1  | Yes  | 堆叠    | 10/100BaseT | -40 to 85°C |
|         |                   |     | <a href="#">SS-73100-082</a>           | 2   | 2x1  | No   | 堆叠    | 10/100BaseT | -40 to 85°C |
|         |                   |     | <a href="#">SS-74500-020</a>           | 4   | 2x2  | Yes  | 堆叠    | 10/100BaseT | -40 to 85°C |
|         |                   |     | <a href="#">SS-7388H22S-PG4-AC-50</a>  | 4   | 2x2  | No   | 堆叠    | 10/100BaseT | -40 to 85°C |
|         |                   |     | <a href="#">SS-74500-024</a>           | 8   | 2x4  | Yes  | 堆叠    | 10/100BaseT | -40 to 85°C |
|         |                   |     | <a href="#">SS-73100-073</a>           | 8   | 2x4  | No   | 堆叠    | 10/100BaseT | -40 to 85°C |
|         |                   |     | <a href="#">SS-74500-028</a>           | 12  | 2x6  | Yes  | 堆叠    | 10/100BaseT | -40 to 85°C |
|         |                   |     | <a href="#">SS73100-046F</a>           | 12  | 2x6  | No   | 堆叠    | 10/100BaseT | -40 to 85°C |
|         |                   |     | <a href="#">SS-74500-022</a>           | 16  | 2x8  | Yes  | 堆叠    | 10/100BaseT | -40 to 85°C |
|         |                   |     | <a href="#">SS73100-047F</a>           | 16  | 2x8  | No   | 堆叠    | 10/100BaseT | -40 to 85°C |
| 88E6250 | S558-5999-AA-F    | 4   | <a href="#">SS-7488SC5-GG-PG4-BA</a>   | 1   | 1x1  | Yes  | 选项卡向下 | 10/100BaseT | -40 to 85°C |
|         |                   |     | <a href="#">SS-700810S-A-PG4-BA</a>    | 1   | 1x1  | No   | 选项卡向下 | 10/100BaseT | -40 to 85°C |
|         |                   |     | <a href="#">SS-74301-001</a>           | 1   | 1x1  | Yes  | 垂直    | 10/100BaseT | -40 to 85°C |
|         |                   |     | <a href="#">SS-7188VS-A-NF-50</a>      | 1   | 1x1  | No   | 垂直    | 10/100BaseT | -40 to 85°C |
|         |                   |     | <a href="#">SS-748802SC5-YG-PG4-BZ</a> | 2   | 1x2  | Yes  | 选项卡向下 | 10/100BaseT | -40 to 85°C |
|         |                   |     | <a href="#">SS71800-035F</a>           | 2   | 1x2  | No   | 选项卡向下 | 10/100BaseT | -40 to 85°C |
|         |                   |     | <a href="#">SS-748804SC5-YG-PG4-BZ</a> | 4   | 1x4  | Yes  | 选项卡向下 | 10/100BaseT | -40 to 85°C |
|         |                   |     | <a href="#">SS71800-041F</a>           | 4   | 1x4  | No   | 选项卡向下 | 10/100BaseT | -40 to 85°C |
|         |                   |     | <a href="#">SS-74500-029</a>           | 2   | 2x1  | Yes  | 堆叠    | 10/100BaseT | 0 to 70°C   |
|         |                   |     | <a href="#">SS-73100-082</a>           | 2   | 2x1  | No   | 堆叠    | 10/100BaseT | 0 to 70°C   |
|         |                   |     | <a href="#">SS-74500-020</a>           | 4   | 2x2  | Yes  | 堆叠    | 10/100BaseT | -40 to 85°C |
|         |                   |     | <a href="#">SS-7388H22S-PG4-AC-50</a>  | 4   | 2x2  | No   | 堆叠    | 10/100BaseT | -40 to 85°C |
|         |                   |     | <a href="#">SS-74500-024</a>           | 8   | 2x4  | Yes  | 堆叠    | 10/100BaseT | -40 to 85°C |
|         |                   |     | <a href="#">SS-73100-073</a>           | 8   | 2x4  | No   | 堆叠    | 10/100BaseT | -40 to 85°C |
|         |                   |     | <a href="#">SS-74500-028</a>           | 12  | 2x6  | Yes  | 堆叠    | 10/100BaseT | -40 to 85°C |
|         |                   |     | <a href="#">SS73100-046F</a>           | 12  | 2x6  | No   | 堆叠    | 10/100BaseT | -40 to 85°C |
|         |                   |     | <a href="#">SS-74500-022</a>           | 16  | 2x8  | Yes  | 堆叠    | 10/100BaseT | -40 to 85°C |
|         |                   |     | <a href="#">SS73100-047F</a>           | 16  | 2x8  | No   | 堆叠    | 10/100BaseT | -40 to 85°C |

10/100/1000 单端口 PHY ( 续 )

| IC 系列  | 产品编号              |     |                                      |     | 端口配置 | LEDs | 取向    | 应用             | 工作温度        |
|--|-------------------|-----|--------------------------------------|-----|------|------|-------|----------------|-------------|
|  | Bel Magnetic 解决方案 | 端口数 | Stewart连接器                           | 端口数 |      |      |       |                |             |
| 88E1114<br>88E1115<br>88E1116<br>88E1116R<br>88E1118<br>88E1118R<br>88E1310<br>88E1310S<br>88E1318<br>88E1318S<br>88E1111<br>88E1112<br>88E1119R<br>88E1510<br>88E1514 | S558-5999-AB-F    | 1   | <a href="#">SS-7488SC5-GG-PG4-BA</a> | 1   | 1x1  | Yes  | 选项卡向下 | 1000BaseT      | -40 to 85°C |
|  |                   |     | <a href="#">SS-700810S-A-PG4-BA</a>  | 1   | 1x1  | No   | 选项卡向下 | 1000BaseT      | -40 to 85°C |
|  |                   |     | <a href="#">SS-74301-001</a>         | 1   | 1x1  | Yes  | 垂直    | 1000BaseT      | -40 to 85°C |
|  |                   |     | <a href="#">SS-7188VS-A-NF-50</a>    | 1   | 1x1  | No   | 垂直    | 1000BaseT      | -40 to 85°C |
|  |                   |     | <a href="#">SS-7488SC5-GG-PG4-BA</a> | 1   | 1x1  | Yes  | 选项卡向下 | 1000BaseT      | -40 to 85°C |
|  |                   |     | <a href="#">SS-7188S-A-PG4-BA-50</a> | 1   | 1x1  | No   | 选项卡向下 | 1000BaseT      | -40 to 85°C |
|  |                   |     | <a href="#">SS-74301-001</a>         | 1   | 1x1  | Yes  | 垂直    | 1000BaseT      | -40 to 85°C |
|  |                   |     | <a href="#">SS-7188VS-A-NF-50</a>    | 1   | 1x1  | No   | 垂直    | 1000BaseT      | -40 to 85°C |
|  |                   |     | <a href="#">SS-7488SC5-GG-PG4-BA</a> | 1   | 1x1  | Yes  | 选项卡向下 | 1000BaseT      | -40 to 85°C |
|  |                   |     | <a href="#">SS-7188S-A-PG4-BA-50</a> | 1   | 1x1  | No   | 选项卡向下 | 1000BaseT      | -40 to 85°C |
| 88E1011  | S558-5999-AR-F    | 1   | <a href="#">SS-74301-001</a>         | 1   | 1x1  | Yes  | 垂直    | 1000BaseT      | -40 to 85°C |
|  |                   |     | <a href="#">SS-7188VS-A-NF-50</a>    | 1   | 1x1  | No   | 垂直    | 1000BaseT      | -40 to 85°C |
|  |                   |     | <a href="#">SS-7488SC5-GG-PG4-BA</a> | 1   | 1x1  | Yes  | 选项卡向下 | 1000BaseT      | -40 to 85°C |
|  |                   |     | <a href="#">SS-7188S-A-PG4-BA-50</a> | 1   | 1x1  | No   | 选项卡向下 | 1000BaseT      | -40 to 85°C |
| 88E1518  | S558-5500-68      | 1   | <a href="#">SS-7488SC5-GG-PG4-BA</a> | 1   | 1x1  | Yes  | 选项卡向下 | 1000BaseT PoE+ | -40 to 85°C |
|  |                   |     | <a href="#">SS-7188S-A-PG4-BA-50</a> | 1   | 1x1  | No   | 选项卡向下 | 1000BaseT PoE+ | -40 to 85°C |
|  |                   |     | <a href="#">SS-74301-001</a>         | 1   | 1x1  | Yes  | 垂直    | 1000BaseT PoE+ | -40 to 85°C |
|  |                   |     | <a href="#">SS-7188VS-A-NF-50</a>    | 1   | 1x1  | No   | 垂直    | 1000BaseT PoE+ | -40 to 85°C |
| 88E1518  | S558-5500-76      | 1   | <a href="#">SS-7488SC5-GG-PG4-BA</a> | 1   | 1x1  | Yes  | 选项卡向下 | 1000BaseT PoE+ | -40 to 85°C |
|  |                   |     | <a href="#">SS-7188S-A-PG4-BA-50</a> | 1   | 1x1  | No   | 选项卡向下 | 1000BaseT PoE+ | -40 to 85°C |
|  |                   |     | <a href="#">SS-74301-001</a>         | 1   | 1x1  | Yes  | 垂直    | 1000BaseT PoE+ | -40 to 85°C |
|  |                   |     | <a href="#">SS-7188VS-A-NF-50</a>    | 1   | 1x1  | No   | 垂直    | 1000BaseT PoE+ | -40 to 85°C |

<http://www.powerteda.com>





# 10/100/1000 多端口 PHY

| IC 系列   | 产品编号                           |     |  |     | 端口配置 | LEDs | 取向    | 应用        | 工作温度        |
|---|--------------------------------|-----|--|-----|------|------|-------|-----------|-------------|
|   | Bel Magnetic 解决方案              | 端口数 | Stewart 连接器                            | 端口数 |      |      |       |           |             |
| 88E1121<br>88E1121R<br>88E1548<br>88E1545<br>88E1543<br>88E1340<br>88E1340S<br>88E1322<br>88E1240<br>88E1149<br>88E1149R<br>88E1141<br>88E1145<br>88E1680<br>88E1680H | <a href="#">S558-5999-BQ-F</a> | 2   | <a href="#">SS-7488SC5-GG-PG4-BA</a>   | 1   | 1x1  | Yes  | 选项卡向下 | 1000BaseT | -40 to 85°C |
|   |                                |     | <a href="#">SS-7188S-A-PG4-BA-50</a>   | 1   | 1x1  | No   | 选项卡向下 | 1000BaseT | -40 to 85°C |
|   |                                |     | <a href="#">SS-74301-001</a>           | 1   | 1x1  | Yes  | 垂直    | 1000BaseT | -40 to 85°C |
|   |                                |     | <a href="#">SS-7188VS-A-NF-50</a>      | 1   | 1x1  | No   | 垂直    | 1000BaseT | -40 to 85°C |
|   |                                |     | <a href="#">SS-748802SC5-YG-PG4-BZ</a> | 2   | 1x2  | Yes  | 选项卡向下 | 1000BaseT | -40 to 85°C |
|   |                                |     | <a href="#">SS71800-035F</a>           | 2   | 1x2  | No   | 选项卡向下 | 1000BaseT | -40 to 85°C |
|   |                                |     | <a href="#">SS-748804SC5-YG-PG4-BZ</a> | 4   | 1x4  | Yes  | 选项卡向下 | 1000BaseT | -40 to 85°C |
|   |                                |     | <a href="#">SS71800-041F</a>           | 4   | 1x4  | No   | 选项卡向下 | 1000BaseT | -40 to 85°C |
|   |                                |     | <a href="#">SS-74500-029</a>           | 2   | 2x1  | Yes  | 堆叠    | 1000BaseT | -40 to 85°C |
|   |                                |     | <a href="#">SS-73100-082</a>           | 2   | 2x1  | No   | 堆叠    | 1000BaseT | -40 to 85°C |
|   |                                |     | <a href="#">SS-74500-020</a>           | 4   | 2x2  | Yes  | 堆叠    | 1000BaseT | -40 to 85°C |
|   |                                |     | <a href="#">SS-7388H22S-PG4-AC-50</a>  | 4   | 2x2  | No   | 堆叠    | 1000BaseT | -40 to 85°C |
|   |                                |     | <a href="#">SS-74500-024</a>           | 8   | 2x4  | Yes  | 堆叠    | 1000BaseT | -40 to 85°C |
|   |                                |     | <a href="#">SS-73100-073</a>           | 8   | 2x4  | No   | 堆叠    | 1000BaseT | -40 to 85°C |
|   |                                |     | <a href="#">SS-74500-028</a>           | 12  | 2x6  | Yes  | 堆叠    | 1000BaseT | -40 to 85°C |
|   |                                |     | <a href="#">SS73100-046F</a>           | 12  | 2x6  | No   | 堆叠    | 1000BaseT | -40 to 85°C |
| 88E1121<br>88E1121R<br>88E1548<br>88E1545<br>88E1543<br>88E1340<br>88E1340S<br>88E1322<br>88E1240<br>88E1149<br>88E1149R<br>88E1141<br>88E1145<br>88E1680<br>88E1680H | <a href="#">S558-5999-CJ</a>   | 2   | <a href="#">SS-7488SC5-GG-PG4-BA</a>   | 1   | 1x1  | Yes  | 选项卡向下 | 1000BaseT | 0 to 70°C   |
|   |                                |     | <a href="#">SS-7188S-A-PG4-BA-50</a>   | 1   | 1x1  | No   | 选项卡向下 | 1000BaseT | 0 to 70°C   |
|   |                                |     | <a href="#">SS-74301-001</a>           | 1   | 1x1  | Yes  | 垂直    | 1000BaseT | 0 to 70°C   |
|   |                                |     | <a href="#">SS-7188VS-A-NF-50</a>      | 1   | 1x1  | No   | 垂直    | 1000BaseT | 0 to 70°C   |
|   |                                |     | <a href="#">SS-748802SC5-YG-PG4-BZ</a> | 2   | 1x2  | Yes  | 选项卡向下 | 1000BaseT | 0 to 70°C   |
|   |                                |     | <a href="#">SS71800-035F</a>           | 2   | 1x2  | No   | 选项卡向下 | 1000BaseT | 0 to 70°C   |
|   |                                |     | <a href="#">SS-748804SC5-YG-PG4-BZ</a> | 4   | 1x4  | Yes  | 选项卡向下 | 1000BaseT | 0 to 70°C   |
|   |                                |     | <a href="#">SS71800-041F</a>           | 4   | 1x4  | No   | 选项卡向下 | 1000BaseT | 0 to 70°C   |
|   |                                |     | <a href="#">SS-74500-029</a>           | 2   | 2x1  | Yes  | 堆叠    | 1000BaseT | 0 to 70°C   |
|   |                                |     | <a href="#">SS-73100-082</a>           | 2   | 2x1  | No   | 堆叠    | 1000BaseT | 0 to 70°C   |
|   |                                |     | <a href="#">SS-74500-020</a>           | 4   | 2x2  | Yes  | 堆叠    | 1000BaseT | 0 to 70°C   |
|   |                                |     | <a href="#">SS-7388H22S-PG4-AC-50</a>  | 4   | 2x2  | No   | 堆叠    | 1000BaseT | 0 to 70°C   |
|   |                                |     | <a href="#">SS-74500-024</a>           | 8   | 2x4  | Yes  | 堆叠    | 1000BaseT | 0 to 70°C   |
|   |                                |     | <a href="#">SS-73100-073</a>           | 8   | 2x4  | No   | 堆叠    | 1000BaseT | 0 to 70°C   |
|   |                                |     | <a href="#">SS-74500-028</a>           | 12  | 2x6  | Yes  | 堆叠    | 1000BaseT | 0 to 70°C   |
|   |                                |     | <a href="#">SS73100-046F</a>           | 12  | 2x6  | No   | 堆叠    | 1000BaseT | 0 to 70°C   |



## 10/100/1000 多端口 PHY (续)

| IC 系列              | 产品编号              |     |  |     | 端口配置 | LEDs | 取向       | Application | 工作温度        |
|--------------------|-------------------|-----|--|-----|------|------|----------|-------------|-------------|
|                    | Bel Magnetic 解决方案 | 端口数 | Stewart 连接器                            | 端口数 |      |      |          |             |             |
| 88E6151<br>88E1685 | S558-5999-DC      | 2   | <a href="#">SS-7488SC5-GG-PG4-BA</a>   | 1   | 1x1  | Yes  | Tab Down | 1000BaseT   | -40 to 85°C |
|                    |                   |     | <a href="#">SS-7188S-A-PG4-BA-50</a>   | 1   | 1x1  | No   | Tab Down | 1000BaseT   | -40 to 85°C |
|                    |                   |     | <a href="#">SS-74301-001</a>           | 1   | 1x1  | Yes  | Vertical | 1000BaseT   | -40 to 85°C |
|                    |                   |     | <a href="#">SS-7188VS-A-NF-50</a>      | 1   | 1x1  | No   | Vertical | 1000BaseT   | -40 to 85°C |
|                    |                   |     | <a href="#">SS-748802SC5-YG-PG4-BZ</a> | 2   | 1x2  | Yes  | Tab Down | 1000BaseT   | -40 to 85°C |
|                    |                   |     | <a href="#">SS71800-035F</a>           | 2   | 1x2  | No   | Tab Down | 1000BaseT   | -40 to 85°C |
|                    |                   |     | <a href="#">SS-748804SC5-YG-PG4-BZ</a> | 4   | 1x4  | Yes  | Tab Down | 1000BaseT   | -40 to 85°C |
|                    |                   |     | <a href="#">SS71800-041F</a>           | 4   | 1x4  | No   | Tab Down | 1000BaseT   | -40 to 85°C |
|                    |                   |     | <a href="#">SS-74500-029</a>           | 2   | 2x1  | Yes  | Stacked  | 1000BaseT   | -40 to 85°C |
|                    |                   |     | <a href="#">SS-73100-082</a>           | 2   | 2x1  | No   | Stacked  | 1000BaseT   | -40 to 85°C |
|                    |                   |     | <a href="#">SS-74500-020</a>           | 4   | 2x2  | Yes  | Stacked  | 1000BaseT   | -40 to 85°C |
|                    |                   |     | <a href="#">SS-7388H22S-PG4-AC-50</a>  | 4   | 2x2  | No   | Stacked  | 1000BaseT   | -40 to 85°C |
|                    |                   |     | <a href="#">SS-74500-024</a>           | 8   | 2x4  | Yes  | Stacked  | 1000BaseT   | -40 to 85°C |
|                    |                   |     | <a href="#">SS-73100-073</a>           | 8   | 2x4  | No   | Stacked  | 1000BaseT   | -40 to 85°C |
|                    |                   |     | <a href="#">SS-74500-028</a>           | 12  | 2x6  | Yes  | Stacked  | 1000BaseT   | -40 to 85°C |
|                    |                   |     | <a href="#">SS73100-046F</a>           | 12  | 2x6  | No   | Stacked  | 1000BaseT   | -40 to 85°C |

## 2.5G PHYs

| IC 系列                         | 产品编号              |     |  |     | 端口配置 | LEDs | 取向       | 应用              | 工作温度        |
|-------------------------------|-------------------|-----|--|-----|------|------|----------|-----------------|-------------|
|                               | Bel Magnetic 解决方案 | 端口数 | Stewart 连接器                            | 端口数 |      |      |          |                 |             |
| 88X2X10<br>88E2180<br>88E2110 | S558-5500-JD      | 1   | <a href="#">SS-7488SC5-GG-PG4-BA</a>   | 1   | 1x1  | Yes  | Tab Down | 2.5G BaseT PoE+ | -40 to 85°C |
|                               |                   |     | <a href="#">SS-7188S-A-PG4-BA-50</a>   | 1   | 1x1  | No   | Tab Down | 2.5G BaseT PoE+ | -40 to 85°C |
|                               |                   |     | <a href="#">SS-74301-001</a>           | 1   | 1x1  | Yes  | Vertical | 2.5G BaseT PoE+ | -40 to 85°C |
|                               |                   |     | <a href="#">SS-7188VS-A-NF-50</a>      | 1   | 1x1  | No   | Vertical | 2.5G BaseT PoE+ | -40 to 85°C |
|                               |                   |     | <a href="#">SS-748802SC5-YG-PG4-BZ</a> | 2   | 1x2  | Yes  | Tab Down | 2.5G BaseT PoE+ | -40 to 85°C |
|                               |                   |     | <a href="#">SS71800-035F</a>           | 2   | 1x2  | No   | Tab Down | 2.5G BaseT PoE+ | -40 to 85°C |
|                               |                   |     | <a href="#">SS-748804SC5-YG-PG4-BZ</a> | 4   | 1x4  | Yes  | Tab Down | 2.5G BaseT PoE+ | -40 to 85°C |
|                               |                   |     | <a href="#">SS71800-041F</a>           | 4   | 1x4  | No   | Tab Down | 2.5G BaseT PoE+ | -40 to 85°C |
|                               |                   |     | <a href="#">SS-73100-082</a>           | 2   | 2x1  | No   | Stacked  | 2.5G BaseT PoE+ | -40 to 85°C |
|                               |                   |     | <a href="#">SS-73100-073</a>           | 8   | 2x4  | No   | Stacked  | 2.5G BaseT PoE+ | -40 to 85°C |
|                               |                   |     | <a href="#">SS73100-046F</a>           | 12  | 2x6  | No   | Stacked  | 2.5G BaseT PoE+ | -40 to 85°C |

5G PHYs

| IC 系列                         | 产品编号              |     |              |     | 端口配置 | LEDs | 取向       | 应用            | 工作温度        |
|-------------------------------|-------------------|-----|--------------|-----|------|------|----------|---------------|-------------|
|                               | Bel Magnetic 解决方案 | 端口数 | Stewart 连接器  | 端口数 |      |      |          |               |             |
| 88X2X10<br>88E2180<br>88E2110 | S558-5500-JV      | 1   | SS-60300-011 | 1   | 1x1  | No   | Tab Up   | 5G BaseT PoE+ | -40 to 85°C |
|                               |                   |     | SS-60300-046 | 1   | 1x1  | No   | Vertical | 5G BaseT PoE+ | -40 to 85°C |

10G PHYs

| IC 系列   | 产品编号              |     |              |     | 端口配置 | LEDs | 取向       | 应用             | 工作温度        |
|---------|-------------------|-----|--------------|-----|------|------|----------|----------------|-------------|
|         | Bel Magnetic 解决方案 | 端口数 | Stewart 连接器  | 端口数 |      |      |          |                |             |
| 88X31X0 | S558-10GB-15      | 1   | SS-60300-011 | 1   | 1x1  | No   | Tab Up   | 10G BaseT PoE+ | 0 to 70°C   |
|         |                   |     | SS-60300-046 | 1   | 1x1  | No   | Vertical | 10G BaseT PoE+ | 0 to 70°C   |
| 88X32X0 | S558-10GB-22      | 1   | SS-60300-011 | 1   | 1x1  | No   | Tab Up   | 10G BaseT PoE+ | -40 to 85°C |
|         |                   |     | SS-60300-046 | 1   | 1x1  | No   | Vertical | 10G BaseT PoE+ | -40 to 85°C |





#### 关于bel

Bel 成立于 1949 年，设计、制造和销售各种为电子电路供电、保护和连接的产品。

在电子行业超过65年的时间里，Belhas可靠地展示了在多个行业的各种产品领域取得成功的能力。该公司在与市场领导者的工程团队合作的技术创新方面有着良好的记录。

Bel 通过为新产品开发的挑战开发具有成本效益的解决方案，一直被证明是其所选行业中最重要公司的宝贵供应商。通过将我们在产品设计方面的优势与我们自己专门设计的制造设施相结合，Bel 已成为全球范围内强大的竞争对手。



+029-8539595  
[sales001@power-tead.com](mailto:sales001@power-tead.com)  
<http://www.powerteda.com>

---

地址：西安市雁塔区朱雀大街  
19号南方星座A座1304室  
联系人：赵先生13522494281

---